

NOVEMBER 19TH – NOVEMBER 28TH, 2024

THE ISRAEL EXPERIENCE

EVERY STEP, A NEW DISCOVERY.



COST: \$4,699*

Gateway: New York, NY
Tampa Add-On: \$298.00 per person

**All prices reflect a 3.5% cash discount*

TRIP INCLUDES:

Hotels / Buffet Breakfast, Lunch and Dinner Daily + One Soft Drink at Lunch and Dinner / Shabbat of a Lifetime Dinner / Baptismal Robe Rental / Tips and Taxes / Guides / Buses / Drivers / Roundtrip Airfare.

(Additional baggage & optional fees may apply, see fine print for details)

HOTELS:

1 Night in Netanya – Ramada or similar
2 Nights in the Galilee – David's Harp or similar
5 Nights in Jerusalem – Vert Jerusalem (Executive Rooms) or similar

Please be advised that all hotels are subject to availability and itinerary days & overnights are subject to change.

TOUR HOSTS: PASTORS SCOTT & CINDY THOMAS

Tour: NH24 Date: 111924 Code: T ID#: 54539

SCHEDULE OF COVERAGES	MAXIMUM BENEFIT
Part A *	
Trip Cancellation	Trip Cost
Part B	
Trip Interruption	Trip Cost
Missed Connection	\$500
Travel Delay (Up to 10 days up to \$150 Per Day)	\$1,500
Medical Expense / Emergency Evacuation	
Accidental Death & Dismemberment	\$25,000
Emergency Evacuation and Repatriation	\$50,000
Accidental Death & Dismemberment	\$25,000
Baggage and Personal Effects	\$1,000
Baggage Delay	\$200

When you purchase this Travel Protection Plan at or before the final payment due date for Your Trip, you also receive the Noseworthy Travel Services Non-Insurance Cancellation Waiver that allows you to cancel your Noseworthy Travel Services travel arrangements up to the day of departure for any reason (excludes no shows and those not permitted boarding). With this Noseworthy Travel Services Cancellation Waiver, your non-refundable land cancellation penalties will be reimbursed in cash or in travel vouchers (depending on your reason for cancellation). Certain travel programs are not eligible for this benefit, such as cruise and land programs listed and detailed on the Noseworthy Travel Services website (www.noseworthytravel.com). Plan costs must be paid in addition to the initial or second deposit prior to the final payment for coverage to be in effect.

PART A – Non-Insurance Cancellation Waiver is provided by Noseworthy Travel Services. **PART B** – Travel Protection Benefits are provided by United States Fire Insurance Company and serviced by Trip Mate. *In MN and NY, a different cancellation waiver is available. Available for purchase separately in NY.

CONDITIONS & LIMITATIONS

The Travel Protection Plan is only available for citizens or residents of the United States of America. *The plan cost includes the plan premium and a fee for non-insurance assistance services. You may obtain information on the plan fees by emailing assistance@tripmate.com. This advertisement contains highlights of the plans developed by Trip Mate Inc., which include travel insurance coverages underwritten by United States Fire Insurance Company, Principal Office located in Morristown, New Jersey, under form series T7000, T210 and TP-401 et al, and non-insurance Travel Assistance Services provided by General Global Assistance and FootprintID® and a non-insurance Cancellation Waiver provided by Educational Opportunities Tours. The terms of insurance coverages in the plans may vary by jurisdiction and not all insurance coverages are available in all jurisdictions. Insurance coverages in these plans are subject to terms, limitations and exclusions including an exclusion for pre-existing medical conditions. In most states, your travel retailer is not a licensed insurance producer/agent, and is not qualified or authorized to answer technical questions about the terms, benefits, exclusions and conditions of the insurance offered or to evaluate the adequacy of your existing insurance coverage. Your travel retailer may be compensated for the purchase of a plan and may provide general information about the plans offered, including a description of the coverage and price. The purchase of travel insurance is not required in order to purchase any other product or service from your travel retailer. CA DOI toll free number is 800-927-4357. The cost of your plan is for the entire plan, which consists of both insurance and non-insurance components. Individuals looking to obtain additional information regarding the features and pricing of each travel plan component, please contact Trip Mate, Inc. (dba Trip Mate Insurance in CA and UT; CA license #0805270); PO Box 527, Hazelwood, MO 63042; 1-833-297-2255; assistance@tripmate.com. While Trip Mate, Inc. markets the travel insurance in these plans on behalf of USF, non-insurance components of the plans were added to the plans by Trip Mate, Inc., and Trip Mate, Inc. does not receive compensation from USF for providing the non-insurance components of the plans.

TRAVEL PROTECTION PLAN PREMIUM RATES FOR ALL TOURS

For a full description of the plan, visit: www.tripmate.com/wpF427X

TRIP COST	PLAN COST	TRIP COST	PLAN COST
\$0 to \$1,000	\$99	\$4,501 to \$5,000	\$499
\$1,001 to \$1,500	\$149	\$5,001 to \$5,500	\$549
\$1,501 to \$2,000	\$199	\$5,501 to \$6,000	\$599
\$2,001 to \$2,500	\$249	\$6,001 to \$6,500	\$649
\$2,501 to \$3,000	\$299	\$6,501 to \$7,000	\$699
\$3,001 to \$3,500	\$349	\$7,001 to \$8,000	\$799
\$3,501 to \$4,000	\$399	\$8,001 to \$9,000	\$899
\$4,001 to \$4,500	\$449	\$9,001 to \$10,000	\$999

To register or view the tour online, visit:
www.FreeLifeChapel.org

For questions or to register by phone, contact NTS:
Noseworthy Travel Services / 1-800-929-4684 Option #2
Email: nts@travelwithus.com

THE FINE PRINT

INCLUDED IN PRICE:

• Deluxe motorcoaches • 1st class hotels • Guided sightseeing • Administrative fee • Entrance fees to sites visited (as listed in itinerary) • Breakfast, lunches & dinner daily • 1 soft drink at lunch & dinner • Gratuities • Round-trip international airfare • Fuel surcharges \$600 • Government Taxes \$98 (Increases in government tax and fees are subject to change)

NOT INCLUDED IN PRICE:

• Optional Travel Protection Program (see premium schedule) • Optional sightseeing as listed in the brochure • "Love Offering" for guide & driver • Miscellaneous fees such as individual transfers; passports, laundry & baggage fees • \$100 Document fee for Non-US/Canadian residents • Visa for non-US citizens

ACCOMMODATIONS:

Price is per person based on double occupancy. When available, single rooms are often smaller than doubles. While NTS will try to match roommates, NTS cannot guarantee a roommate will be available. Roommates may be assigned as late as 30 days prior to departure and, if one is not available or you request a single room, the following charges apply: \$1,250 during the basic tour. Extra Overnights will cost \$200 per person per night based on double occupancy and \$390 per person per night for a single.

PAYMENT INFORMATION:

A 3.5% surcharge will be added to all credit card transactions.

PAYMENT AMOUNT	PAYMENT DUE DATES & NOTES
\$300	Due upon registration.
\$1,500	Second Deposit due 07/27/24.
Full Payment	Final Payment is due on 09/05/24. If paid after the due date, a late payment fee of \$100 will be assessed.
Travel Protection Premium Amount	The Travel Protection Plan premium will be due no later than 07/27/24 to be in full effect. Travel protection premiums must be paid in addition to your deposits and in advance of the final payment for coverage to be in effect.

REGISTRATIONS RECEIVED AFTER JULY 27, 2024:

We welcome registrations after 07/27/24. Registrations received between 07/28/24 - 08/06/24 will incur a \$100 per person fee. Registrations received between 08/07/24 - 08/21/24 will incur a \$200 per person fee. Registrations received between 08/22/24 - 09/05/24 will incur a \$400 per person fee. Registrations received after 09/06/24 or less will incur an additional fee based on air availability. Additional fees will be advised upon registration.

CANCELLATION FEES:

100% of Cancellation Fees are covered by the optional Travel Protection Program provided premium has been paid and reason for cancellation is coverable. Those who do not take travel protection should be aware of the following per-person cancellation penalties: From day of registration to 105 days prior to departure, you will be charged the \$100 non-refundable cancellation fee plus any airline fees. Additionally, thereafter, you will be charged any airline penalties and a single room supplement if your cancellation forces your roommate into a single plus the following per-person charges: 104-60 days = \$400; 59-45 days = \$600; 44-31 days = 40% of total cost; 30 days to day of departure = 100% of total cost. Submit cancellation in writing. On or after day of departure, there will be no refund for any services not used.

STATEMENTS OF RESPONSIBILITY

NTS does not accept responsibility for losses or additional expenses due to delay or changes in air schedules, hotel overbookings, other hotel related problems or causes, and/or travel supplier cancellations or postponements. Travel suppliers include all tour operators, cruise lines, airlines, hotels, bus companies, entertainment venues, and any other travel supplier used to operate the tour. All such losses or expenses will be the responsibility of the passenger. NTS reserves the right to make adjustments to the itinerary as deemed desirable by NTS, and NTS reserves the right to cancel any tour prior to departure. If a tour is canceled beyond the control of NTS, NTS will provide a refund or a future travel credit to be used two years from the date of issuance for the value of all funds paid by the passenger less nonrefundable travel supplier prepaid deposits, travel supplier change fees, nonrefundable travel protection premiums, and a \$150 administration fee.

FIT TO TRAVEL STATEMENT:

Passengers registering for the tour accept the responsibility for being in good health and able to walk and travel on the tour. Because many of the sites are not accessible to the physically challenged and space limitations on tour buses, wheelchairs and scooters cannot be accommodated. Those needing oxygen or other ambulatory assistance will find the tour extremely limiting in their experiences. Persons using C-pap machines requiring distilled water will need to inform us ahead of time, so we can work with local operators to prepare as it is not always available. NTS reserves the right to refuse or revoke travel to anyone who is in the sole judgment of NTS, incapable of group travel without causing undue demands upon the staff or other tour participants. Accessible rooms/cabins are limited and subject to confirmation after receiving the passenger's written request. Accessible rooms/cabins are limited and subject to confirmation after receiving the passenger's written request.

PASSPORT INFORMATION, CONFIRMATION OF ITINERARY & CHECK IN PROCESS:

Passport information must be submitted to our office no later than 07/27/24. Failure to provide your passport information to our office by this date may result in change fees or denial of travel. Discrepancies in information may result in change fees, delays in receiving travel documents for your trip, or denial of travel. Any fees incurred due to discrepancies are the responsibility of the passenger.

PRICE INCREASES:

All prices quoted in this brochure are subject to change prior to payment in full due to currency fluctuations, fuel surcharge increases, government taxes and fees increases or unforeseen circumstances. In addition, you may be subject to a price increase after payment in full has been received due to potential government imposed taxes and fees.

ON OWN DEVIATIONS:

On own Deviations from the standard tour program must be submitted in writing and are subject to additional airline fees, if applicable. Transfers for passengers who deviate are not included.

VALIDITY DATE:

This brochure is valid until 03/24/24. If validity date has passed, current brochures may be found at www.noseworthytravel.com. Registrations will still be accepted after the validity date.

ITINERARY CHANGES:

Every effort has been made to ensure the accuracy of this brochure. While NTS will make every effort to ensure you will see all sites listed in this brochure, the availability of sites, order of sites and/or days and number of days may be altered to accommodate changes in airline, hotel schedules, and local conditions. No changes to the itinerary are effective unless approved in writing and signed by an authorized officer of the tour operator. Except as stated herein, no other person is authorized to cancel, modify or vary the tour arrangements or to make any representation of warranty concerning the tour. Due to airline schedules, some participants may receive one or two extra leisure days at a nominal per day charge and some extensions may not be available on all departure dates. If itinerary changes necessitate extra overnights, you will be charged \$200 per person per night based on double occupancy; single rooms \$390 per night. Meals for extra nights are not included.

RELEASE INFORMATION:

Payment of deposit indicates permission for NTS or its agents to record the registrant's participation and appearance on video tape, audio tape, film, photograph, or any other medium and to use the registrant's name, likeness, voice, comments, submitted documentation, written papers, and/or biographical material without restrictions or limitation for any advertising, marketing, publicity, educational or promotional purpose which NTS or its agents deem appropriate, unless the registrant or guardian otherwise notifies NTS in writing prior to departure. Enrollment in, payment of deposit and/or acceptance of final documents, vouchers, or tickets shall be deemed to be consent to the Passenger Agreement and Program Conditions of the brochure. Prices are based on tariffs in effect as of January 1 of the previous year and are subject to adjustment without notice in the event of any change or currency fluctuation. Except where otherwise stated, NTS acts only as agent for the relevant supplier in securing hotels, transportation and other travel services and in no event shall NTS be liable for failure by any such supplier to render any transportation, lodging or other travel service to be provided on the tour. The passenger agrees that NTS assumes no liability for injury, death, damage, loss, theft, accident, delay, any lost or damaged luggage, or irregularity which may occur by reason of any negligent or willful act or omission of any suppliers of services. NTS does not own or operate any of the suppliers of services to your tour. Similarly without limiting the foregoing, passenger agrees to hold NTS harmless for any defect in any vehicle, plane, boat, bus, car, van or other vehicle, act of war or insurrection, terrorist activity, revolt or other civil uprising, military action, strikes or labor unrest or any Act of God or for any other act of any third party. Florida law will be applicable to any dispute which arises out of or concerns this brochure or your tour. Any and all litigation must be brought only in and for courts in Polk County, Florida to the exclusion of litigation anywhere else in the world. Educational Opportunities Tours

Educational Opportunities Tours doing business as Noseworthy Travel Services is the tour operator and is solely responsible for the travel program. Educational Opportunities Tours is registered with the State of Florida as a Seller of Travel. Registration No. ST24130. CST2027682-40.

For questions or to register by phone, contact NTS:
Noseworthy Travel Services / 1-800-929-4684 Option #2
Email: nts@travelwithus.com



TRIP ITINERARY

TUESDAY, NOVEMBER 19TH
DEPART THE USA TO TEL AVIV

Today you will depart from the USA to Tel Aviv, Israel. Meals served in flight.

WEDNESDAY, NOVEMBER 20TH
ARRIVE IN TEL AVIV. OVERNIGHT IN NETANYA

Arrive at Ben Gurion International Airport in Tel Aviv and be transferred to your hotel in the Netanya area for check-in, dinner and a good night's sleep.

THURSDAY, NOVEMBER 21ST
CAESAREA MARITIMA, MOUNT CARMEL, TEL MEGIDDO, NAZARETH, CANA, OVERNIGHT IN GALILEE

Wander through the Roman aqueduct and theatre at Caesarea, a center of the early Christians. Here, Cornelius became the first Gentile convert to the new covenant (Acts 10) and where Paul was imprisoned before being taken to Rome for trial (Acts 23). Go to the top of Mount Carmel, where Elijah the prophet called down fire from heaven to prove to Israel the identity of the One true God. Travel the ancient caravan route to Tel Megiddo, where 20 different cities lie superimposed upon each other. Recall Jesus' first miracle as you pass through Cana (John 2). View Nazareth, the boyhood home of Jesus (Matthew 2:23) from the Mount Precipice, where Luke describes how Jesus was rejected by those in the synagogue after He taught them. Filled with anger they, "led Him unto the brow of the hill whereon their city was built, that they might cast Him down headlong" (Luke 4). Check in at the hotel in Galilee (Tiberias hotel) for dinner and your overnight stay.

FRIDAY, NOVEMBER 22ND
SEA OF GALILEE, ANCIENT BOAT KIBBUTZ, BOAT RIDE, FISH LUNCH, CAPERNAUM, MOUNT OF BEATITUDES, TABGHA, MAGDALA, JORDON RIVER BAPTISM, SHABBAT OF A LIFETIME

Drive along the shores of the Sea of Galilee, passing the area of Magdala, home of Mary Magdalene. See the remains of the synagogue that was used by that community 2,000 years ago. Travel to Capernaum, the center of Jesus' ministry in the Galilee. Visit the synagogue that stands on the site where Jesus taught. Recall His teaching and preaching the gospel of the kingdom (Matt. 4). Visit the peaceful Mount of Beatitudes that overlooks the Sea of Galilee. In this area, Jesus preached the Sermon on the Mount (Matt. 5-7). Stop at Tabgha, where the feeding of the 5,000 is remembered at the Church of the Loaves and Fish (Luke 9). Cross the waters of the Sea of Galilee aboard a Kinneret Sailing Company boat. Along the way, you will enjoy a special onboard worship service. Disembark at Kibbutz Nof Ginnosar, home of the remains of an ancient 2,000 year old boat that sailed the Kinneret just like we did! There will also be a stop at the Jordan River for baptism and a time of spiritual blessing. We will end the day with a Shabbat of a Lifetime. This special event is where we will enjoy a private dinner inside of a Jewish home and participate in Shabbat with the family.

SATURDAY, NOVEMBER 23RD
BEIT SHEAN, SHILOH, PSAGOT, JORDAN VALLEY, VALLEY OF THE SHADOW, BETHANY, JERUSALEM

Start the day in Beit Shean, a city continuously inhabited for over 5,000 years. Here, Saul and his sons' bodies were hung from the walls of the city (1 Samuel 31). The uncovered ruins date back to the Greek/Roman city that was part of the Decapolis of Jesus' day. See colonnaded streets with marble sidewalks, Roman public baths, and a theater. Explore Shiloh, the spiritual center for the Promised Land, where Joshua established the Tabernacle. Enjoy lunch at Psagot Winery close to Shiloh. Pass through the Judean Wilderness paralleling the ancient Roman road to view the Valley of the Shadow. From here, you can see St. George's Monastery across the gorge. Visit Bethany, the home of Lazarus, Mary and Martha. Here, Jesus visited on several occasions, and raised Lazarus from the dead (John 11). Arrive in Jerusalem to check into your hotel for dinner and overnight.

SUNDAY, NOVEMBER 24TH
MT. OF OLIVES, PALM SUNDAY ROAD, GARDEN OF GETHSEMANE, EMIK TZURIM PARK, BETHLEHEM

Stand atop the Mount of Olives as Jesus did and enjoy a remarkable view of the "Golden City" of Jerusalem. Forty days after His resurrection, Jesus ascended into heaven from the Mount of Olives (Acts 1). Enter the Garden of Gethsemane, where Jesus went to pray after the Last Supper, and was arrested (Matthew 26). You will also have the opportunity to find ancient treasure from dirt taken from the Temple Mount at the Sifting Project. Cross the border into Bethlehem, the birthplace of Jesus (Luke 2). Look out on the "Shepherd's Fields", where angels spread the Good News.

MONDAY, NOVEMBER 25TH
QUMRAN, MASADA, DEAD SEA, JERUSALEM

Travel to Qumran, the site of the Dead Sea Scroll discovery, to discuss the mysterious community of the Essenes who once lived on the shores of the Dead Sea. Enjoy a visit to Masada, the spectacular mountaintop fortress built by Herod and famous as the last stronghold of the Jewish rebellion against the Romans. Ride the cable car to the top to explore the fortress. Peer down upon the remains of the Roman camps and siege ramp below. On our way to Jerusalem, stop at the shores of the Dead Sea, the lowest spot on earth, where those who desire may take a quick dip in the mineral-laden waters.

TUESDAY, NOVEMBER 26TH
CITY OF DAVID, PILGRIMAGE ROAD, SOUTHERN STEPS, WESTERN WALL, YAD VASHEM

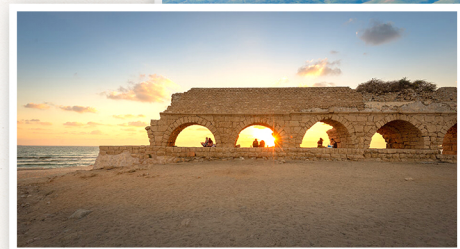
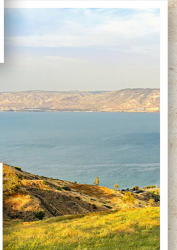
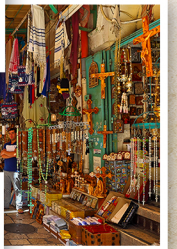
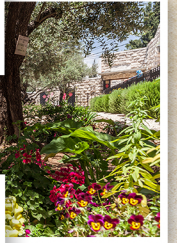
See the 3,000 year old remains of what was the City of David on the southern slope of the city of Jerusalem. This leads down to Hezekiah's Tunnel, built by King Hezekiah to provide water to the city in time of siege. Water from the Spring of Gihon is still flowing in this tunnel today. Hezekiah's Tunnel was an amazing engineering feat that was dug from either end and met in the middle! (Note: Those who are claustrophobic may want to meet the group at the other end of the tunnel!). In this same area, the Pool of Siloam was located - the site of the healing of the man born blind as referenced in John 9. We can walk on the 2,000 year old Southern Steps that lead into the southern entrance of the Temple platform compound. Many ancient Mikvahs are located at the foot of the steps. See the Temple Mount, once the site of the Temple of Solomon. Finally, visit the Western Wall and pray for the peace of Jerusalem. Continue to modern Jerusalem and visit the Yad Vashem Holocaust Memorial and be touched by its poignant images.

WEDNESDAY, NOVEMBER 27TH
MOUNT ZION, UPPER ROOM, KING DAVID'S TOMB, HOUSE OF CAIPHAS, POOL OF BETHESDA, ST. ANNE CHURCH, OLD CITY, CARDO, GARDEN TOMB

Stand in the Upper Room, revered as the place of the Last Supper (Mark 14). View the site of King David's Tomb. Walk through some of the ancient rooms of Caiaphas' the High Priest's house beneath the Church of St. Peter in Gallicantu. Here, it is believed by many, Jesus was held overnight before His crucifixion (Luke 22). Walk through the Old City and enjoy the preserved, ancient culture found in the narrow streets as well as the modernized Cardo in the Jewish Quarter. Walk the Via Dolorosa, "the Way of the Cross." View the Pool of Bethesda (John 5), where Jesus performed the Sabbath miracle. Visit Herod's Antonia Fortress, where Jesus was brought before Pontius Pilate (Luke 23). Take time to reflect on the agony of the cross at Gordon's Calvary and the exhilaration of the resurrection at the Garden Tomb. At the end of your time in the Holy Land, we prepare for our return journey to the USA.

THURSDAY, NOVEMBER 28TH
DEPART TEL AVIV / ARRIVE IN THE USA

Arrive in the USA with a lifetime of memories to cherish!



REGISTER TODAY!!!

Register today for The Israel Experience by scanning the QR code, or by visiting:

www.FreeLifeChapel.org

